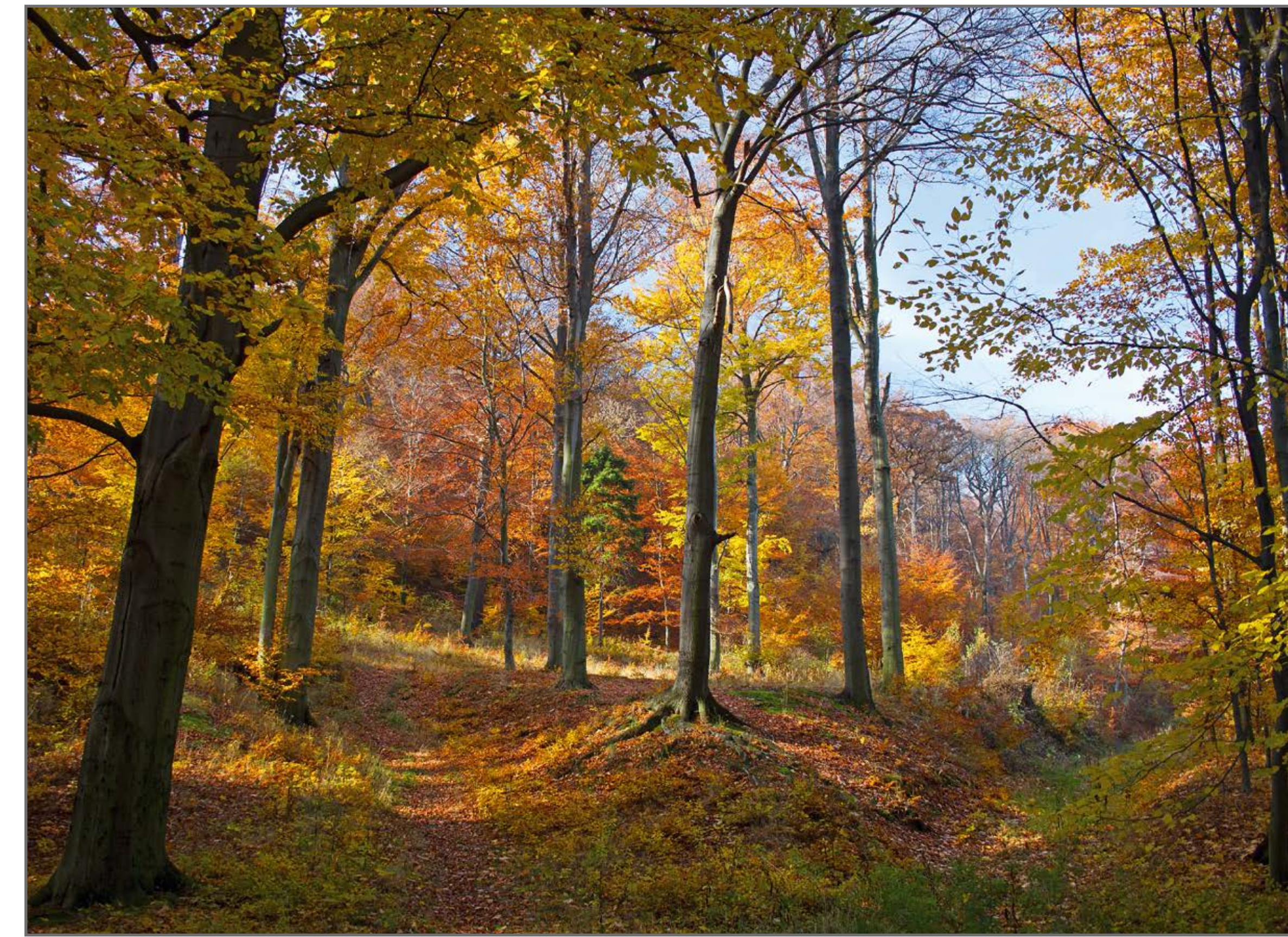
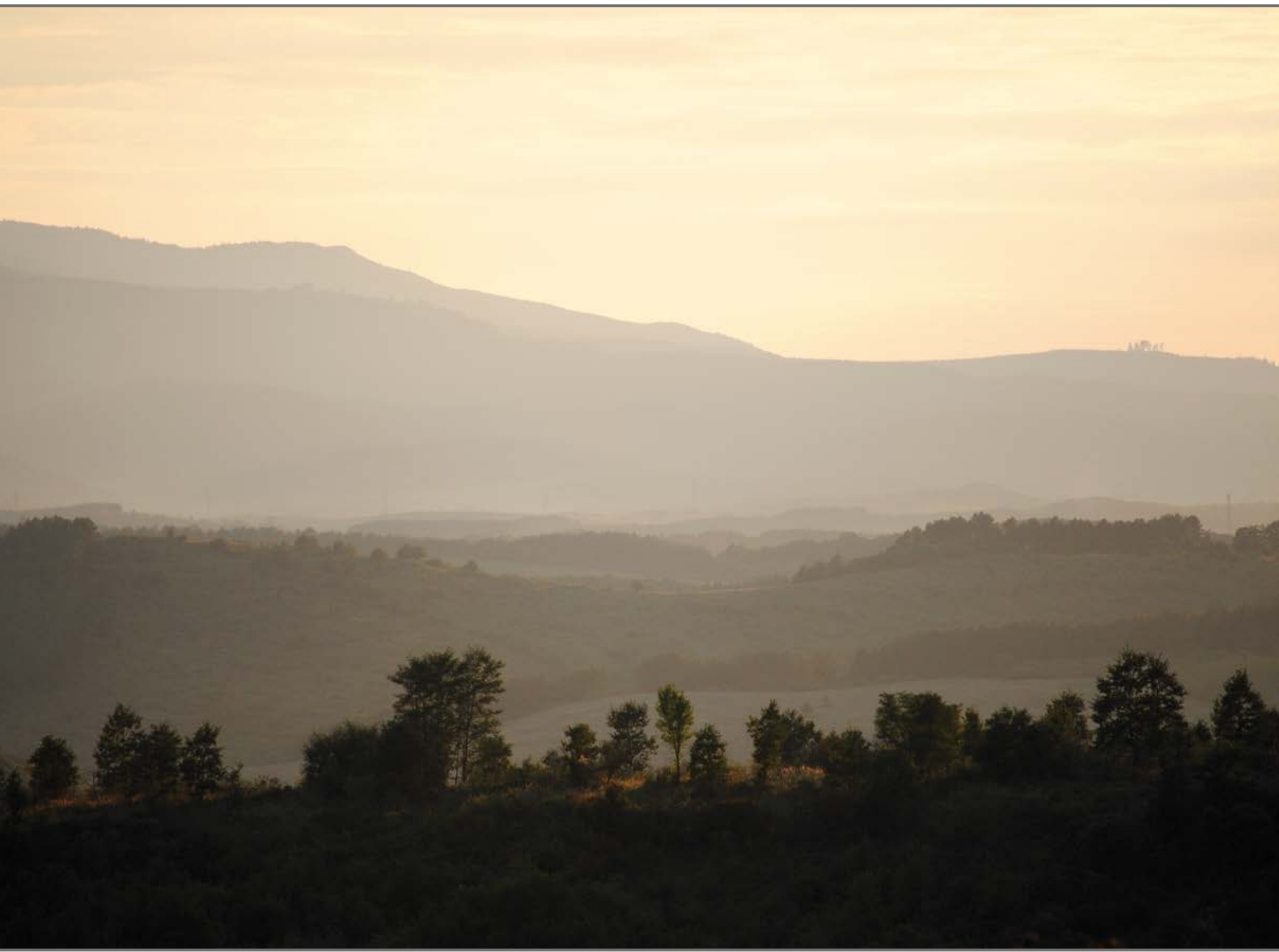


## Implementing Criteria and Indicators for Sustainable Forest Management in Europe



**Duration:** 01.07.2011-31.12.2013

**Budget:** 695,680 EUR

**Funder:** German Federal Ministry of Food, Agriculture and Consumer Protection (BMELV)

**Partners:** European Forest Institute, FOREST EUROPE Liaison Unit Madrid, UNECE/FAO, METLA

### Background

Criteria and indicators (C&I) have emerged as a powerful tool to promote sustainable forest management (SFM). Since the United Nations Conference on Environment and Development (UNCED) in Rio in 1992, several different international processes and initiatives have developed criteria and indicators as a policy instrument to evaluate and report progress towards SFM.

FOREST EUROPE is the pan-European policy process for the sustainable management of the continent's forests. It develops common strategies for its 46 participating countries and the European Union on how to protect and sustainably manage forests. The FOREST EUROPE process has developed a pan-European C&I set. This consists of:

- **6 criteria**
- **35 quantitative indicators** which describe the forest status and changes
- **17 qualitative indicators** which describe national forest policies, institutions and instruments

This pan-European set has been the basis for FOREST EUROPE/UNECE/FAO State of Europe's Forests Assessments in 2003, 2007 and 2011. It has also provided a basis for regional and national policy formulation, analysis and monitoring. However, the picture of how this pan-European set has been implemented remains rather vague. The CI-SFM project aims to fill that gap.



### Project aims

The CI-SFM project aims to:

- Analyse the implementation of criteria and indicators for sustainable forest management in the 46 FOREST EUROPE signatory states.
- Strengthen the process and use of criteria and indicators, not only as a tool for monitoring and reporting, but also for policy making at national and European level.

### Project structure

#### 1 WP1: Project management and dissemination

This includes all aspects of communication, collaboration and coordination to meet the technical and quality targets of the project. WP1 is responsible for project meetings, the organisation of workshops, and the timely submission of deliverables.

#### 2 WP2: State-of-the-art report of the development and implementation of C&I for SFM and resulting challenges

This report will provide a historical overview of the different developments at European, national and other levels, develop a working definition of "implementing C&I", and evaluate the achievements of the pan-European C&I process. There will be a literature review, and contact with expert representatives of other C&I processes and activities related to forests.

#### 3 WP3: National assessments on C&I implementation

These determine to what extent the C&I are being implemented at national and sub-national level, and in what way (e.g. monitoring and data collection, national forest reports, policy formulation, communication). This WP will also investigate the factors of effectiveness and fields of application of C&I, besides identifying challenges and future prospects at national and sub-national level.

#### 4 WP4: Regional workshops on C&I development and implementation

Regional workshops will help to increase awareness of the development and use of C&I, and facilitate information exchange about relevant experiences among the signatory states of FOREST EUROPE. These workshops will be held during spring 2013 covering various regions of Europe.

#### 5 WP5: Pan-European Forum on C&I implementation

A pan-European Forum will be organised during the final project phase. This will bring together the regional analysis and experiences collected from the national reports and allow the presentation and discussion of the preliminary findings of the project.

#### 6 WP6: Final report and recommendations on C&I further development and implementation

This will summarise the results of the project, including research carried out under WP2 and the national and regional approaches from WP3. The outputs from the regional workshops and pan-European Forum (WP4 and WP5) will also be incorporated.

#### 7 WP7: Networking and web platform on C&I for SFM

Networking activity began with the project kick-off meeting. The ci-sfm.org website will be accessible for the project duration and will be kept online after the project finalization. This will serve as a platform to interlink ongoing C&I related projects and initiatives in Europe, and will:

- Facilitate closer communication and exchange between C&I experts;
- Build bridges from sub-national and national level initiatives to the pan-European C&I process;
- Foster collaboration between forest and other environmental sectors and indicator systems.

### Outputs

The project outputs will include:

- A state-of-the-art report on the development, implementation and future challenges for the pan-European criteria and indicators for sustainable forest management.
- Regional workshops to help information exchange and increase awareness about C&I.
- A pan-European Forum to bring together the regional analysis and national experiences.
- A final summary report, including recommendations for improving the C&I set.

### More information

Contact: Hubert Inhaizer, Project Leader  
Email: hubert.inhaizer@efi.int

<http://ci-sfm.org/>



METLA

With the financial support of  
Bundesministerium für Ernährung, Landwirtschaft und Verbraucherschutz